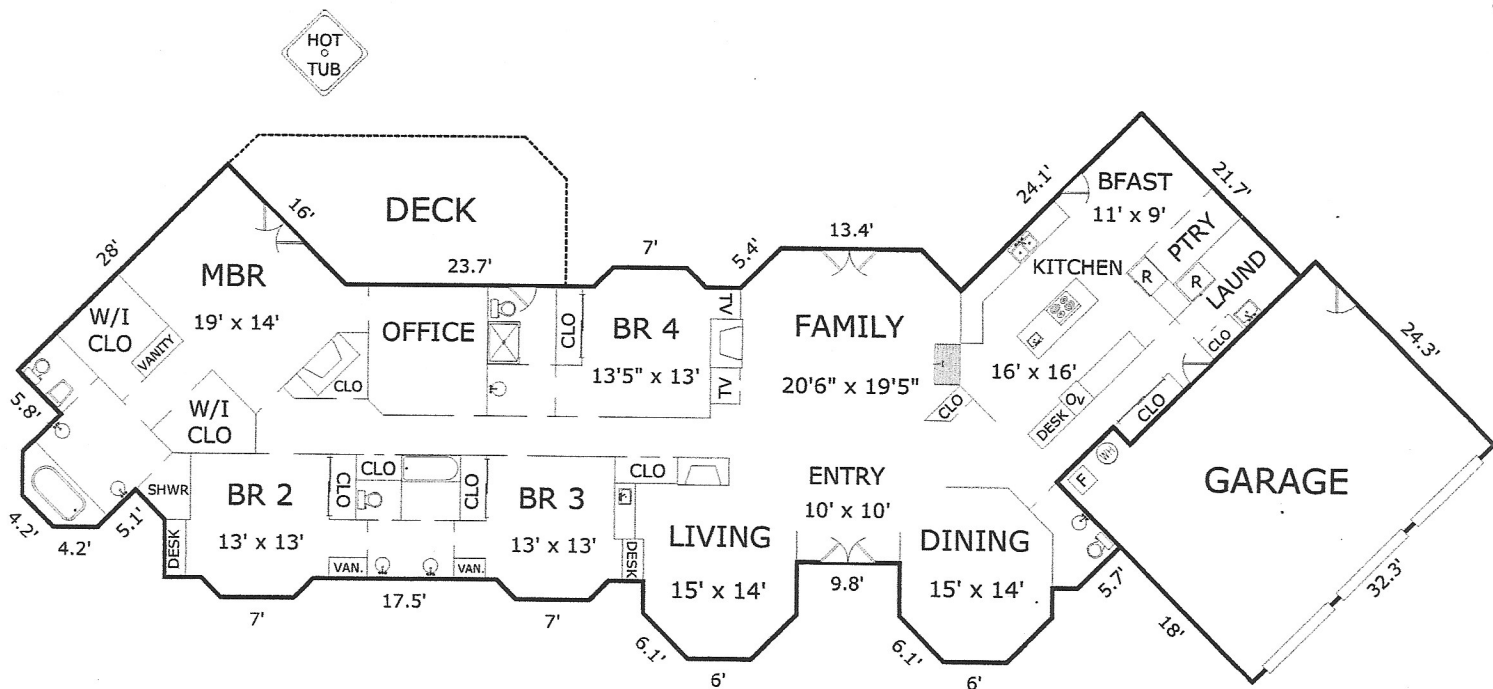


11179 SADDLE ROAD, MONTEREY, CA 93940



AREA CALCULATIONS

First Floor Approximate Sq. Ft:	3,625 sq. ft.
Net Livable Approximate Area:	3,625 sq. ft.
Garage Approximate Area:	802 sq. ft.
Deck Approximate Area:	380 sq. ft.