



MAJESTIC VIEWS OF THE PACIFIC



25905 ENCLAVE COURT, BAY RIDGE OF MONTEREY

Very Desirable, Private and Secluded Setting

Relish the magnificent and expansive Pacific Ocean and Monterey Bay views from one of the last lots available in Bay Ridge. Enjoy spectacular sunsets and the twinkling lights of the bay at your feet, high above the fog line in this sunny and warm location. This is one of the larger lots in the neighborhood at 11.66 generous acres allowing for absolute privacy and serenity for years to come. New homes here enjoy all of the peace, privacy and tranquility of fine estate living yet are just minutes away from the hustle and bustle of the peninsula cities, restaurants and night life. Premium building sites of this grandeur are virtually unavailable anywhere on Monterey Peninsula. Image your dream residence in this dramatic setting or utilize the drawings that were previously approved for construction as a starting point.

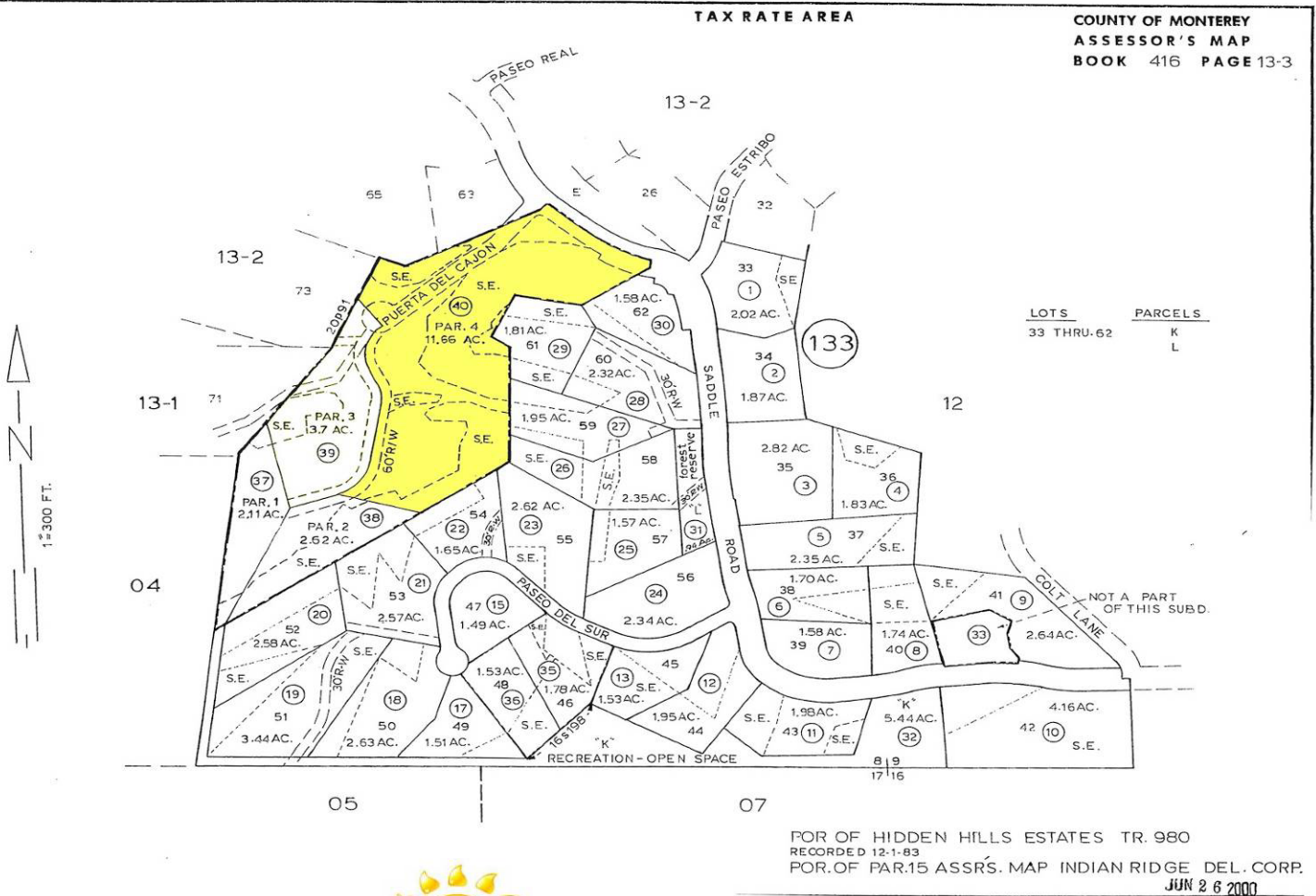
This amazing opportunity is offered at \$430,000



**GAYLE CRUSAN
MARK TAMAGNI
831-595-1501**

DREAMS... we turn them into your address

11.66 ACRE PARCEL SHOWN IN YELLOW ON MAP BELOW



BAY RIDGE MONTEREY, CALIFORNIA

Fine Estate Living in a Sunny and Private Gated Community

Noted for its gorgeous pastoral settings, Bay Ridge is located along Highway 68 just across the street from Pasadera. Highway 68 is a California Scenic Highway that receives special conservation treatment to protect its natural beauty. Above California's Pacific Coast, this area of Monterey enjoys stunning, breathtaking views from its many secluded parcels. Its central location along Scenic Route 68 makes it convenient to all cities and areas in Monterey County. The Monterey Airport is just 5 minutes away, and it is 12 miles to Carmel, 12 miles to Salinas and only 8 miles to downtown Monterey or Carmel Valley Village.

Those who live in this location benefit from the area's exceptional weather. At approximately 1000 feet it is frequently above the fog line in the warmth of the sun. The temperature is 5-10 degrees warmer than Monterey proper and as much as 15 degrees warmer than Pebble Beach. The great outdoors is sunny and accessible when the marine layer is still hovering in adjacent areas. With its peaceful location and private setting, Bay Ridge offers a higher quality of life not often found within the city limits of Monterey. All this and an affordable price point create a slice of paradise that could be yours.

Discriminating persons, seeking a tranquil environment of exquisite beauty, privacy, magnificent views, and impeccable weather will find here the culmination of their dreams.

Information deemed to be accurate but not guaranteed.



300 SKY PARK DRIVE | MONTEREY | 831-333-9500 | #01260773

Gayle Crusan . 831-595-1501 . #01038531 . gaylecrusan@gmail.com
Mark Tamagni . 831-596-1019 . #01300454 . mtam@mbay.net

WWW.INTERNATIONALESTATES.COM